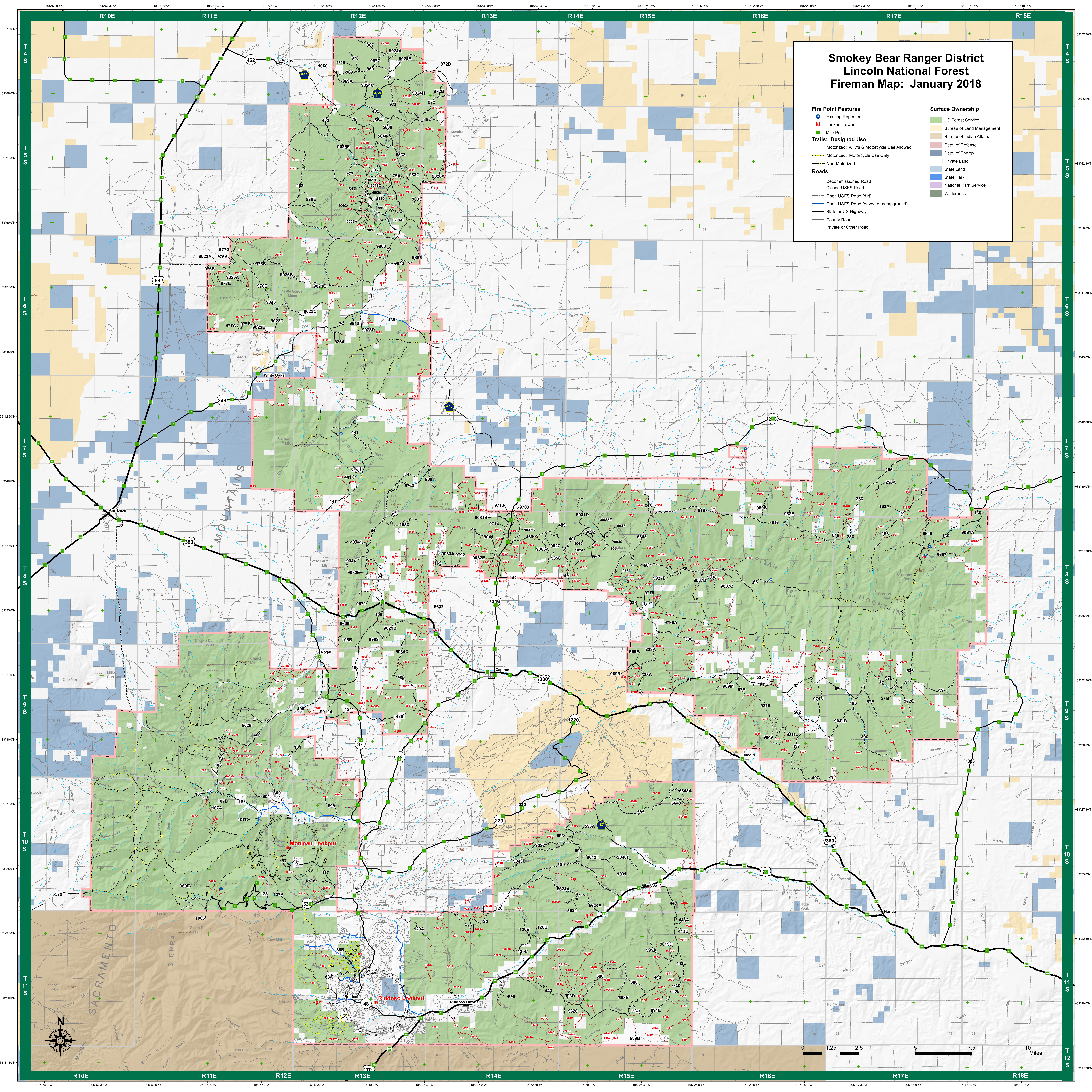


Smokey Bear Ranger District Lincoln National Forest Fireman Map: January 2018

- Fire Point Features**
 - Existing Repeater
 - Lookout Tower
 - Mile Post
- Trails: Designed Use**
 - Motorized: ATVs & Motorcycle Use Allowed
 - Motorized: Motorcycle Use Only
 - Non-Motorized
- Roads**
 - Decommissioned Road
 - Closed USFS Road
 - Open USFS Road (dirt)
 - Open USFS Road (paved or campground)
 - State or US Highway
 - County Road
 - Private or Other Road
- Surface Ownership**
 - US Forest Service
 - Bureau of Land Management
 - Bureau of Indian Affairs
 - Dept. of Defense
 - Dept. of Energy
 - Private Land
 - State Land
 - State Park
 - National Park Service
 - Wilderness



0 1.25 2.5 5 7.5 10 Miles

